



GeneTouch Corp.



AeroTouch Interactive Touch Display



9 Split-screen



Infrared Touch



AG Temper Glass



Mutual view
Sharing



Dual-band Wifi



16W Speakers



Broadcast
system(optional)



Cross Platform
Annotation



Android 9.0

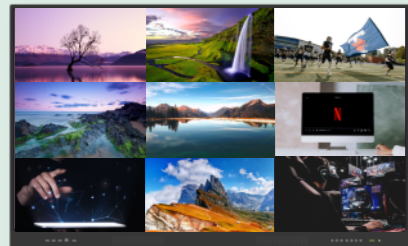
V3 Series 65"/75"/86"



V3

Interactive Multi-Touch Monitor with built-in Android system creates an intuitive interface to operate without PC required and features wireless collaboration with cross-platform devices in the classroom.
It's indeed an essential part for teaching and learning environment.

01



Wireless Mirroring

- **9 Split-Screen**
Mirroring 9 devices during session
- **Multi-Screen**
Stream & View at the same time
- **Both-Way Touch**
Touch functionality works both way
Support: iOS, Mac OS, Windows OS, Android OS, Chrome OS



02



Cross-Platform Annotation Tool

Natural Handwriting Experience

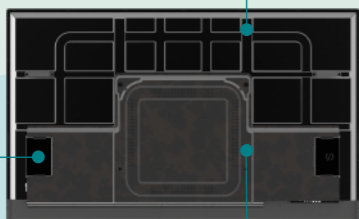


03

Narrow Bezel Design



Build-in Intel Standard OPS Slot
Max. 4K/60Hz resolution



VESA Mounting

600×400mm: 65"/75"
800×600mm: 86"

- **Screen Control**
- **Customized Input Rename**
- **Over the Air (OTA) Update**
- **Bluetooth 5.0**
- **LAN In & Out**
Support WOL(Wake-on-LAN)
- **File Explorer**
Without PC Required
- **Cross-Platform Sharing**

- **Picture-In-Picture (PIP)**
Input source preview
- **Build-in Android System**
Android 9.0
- **Dual-Band Wi-Fi**
- **Enhanced Eye Protection**
- **Viewing Angle: 178°**



04

iCast Digital Signage System (Optional)



Control Center

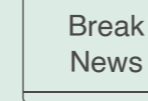
- Centralized display management
- Real-time dispatch, Off-line display



Feature

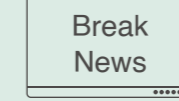
- Schedule content for timely promotions
- Network distribution via Cloud
- Enhance management efficiency

Classroom 1

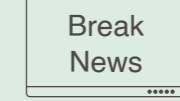


- Emergency Notice
- Full-sized Poster
- Schedule Management
- Remote display status

Classroom 2



Classroom 3



Classroom 4



Classroom 5



Media Management Platform

- Collect display information
- Data analysis

Content Management

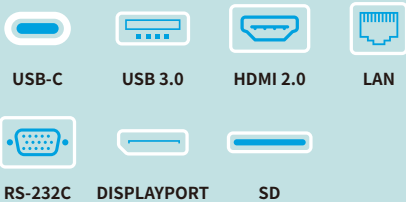
- Scheduled Playlist
- Group Management
- Clean & clear user interface
- Mult playlist fuction: Pictures, YouTube, HTML



Specification

Model No.	GM65V25AZD	GM75V25AZD	GM86V25AZD
LED Panel			
Screensize(Diag)	65"	75"	86"
Resolution	3840 x 2160		
Aspect Ratio	16:9		
Brightness	450cd/ m ²		
Contrast Ratio	5000:1		
Viewing Angle	178°/178°		
Response Time	6 ms		
Backlight Unit	Direct LED		
Backlight Life	50,000 hours		
Touch			
Touch Technology	Infrared Touch 40pt		
Touch Resolution	32767 x 32767		
OS Compatibility	Win 11/10/8/7:40pt, Win XP:1pt, Mac:1pt, Android:20pt, Linux:1pt, Chrom:1pt		
Tempered Glass	Anti-tempered glass 4 mm / 7H		
Connectivity Input			
Video(Analog)	VGA x 1, AV x 1, YPbPr x 1		
Video(Digital)	HDMI 2.0 x 3, DP 1.2 x 1		
Audio	Audio in (3.5mm) x1, Mic (3.5mm) x1		
Media(Android)	USB3.0 A-type x4, USB-C x1, Micro SD Carel slot x1, USB2.0 A-type x1		
Media	USB 3.0 A-type x 3		
LAN	RJ 45 x 1		
Screen Control	RS232C (In/Out) x 1		
OPS Slot	Support Max 4K/60 fps		
Connectivity Output			
Video(Digital)	HDMI 2.0 x 1		
Audio	SPDIF (Optical) x 1, Earphone x 1		
Touch	USB 2.0 B-type x 5		
LAN	RJ45 x 1		
Audio			
Speakers	16W x 2		
Power			
Input Voltage	AC100-240 V 50/60 Hz		
Typical	≤ 220W	≤ 330W	≤ 410W
Standby	≤ 0.5W		
Environmental			
Operation Temperature	0-40 °C		
Operation Humidity	20-80% RH		
Size and Weight			
Dimensions	1471 x 897.5 x 100.5 mm	1692 x 1022 x 100.5 mm	1943 x 1166 x 100.5 mm
VESA Mounting	600 x 400 mm	600 x 400 mm	800 x 600 mm
Net Weight	45 kgs	62 kgs	76 kgs
Android			
System Version	Android 9.0		
CPU	A73 x 4		
GPU	Mali-G71-MP3		
RAM	4 GB		
ROM	32 GB		

Multi-IO Port Connection



V3 Accessory

- Power Cord (US) 3m x 1
- HDMI Cable 3m x 1
- Touch USB Cable 3m x 1
- Remote Control x 1
- Stylus x 2
- Wi-Fi Dongle x1
- Quick Start Guidex 1
- Screws(M8) x 4
- Wall Mount Kit x 1

